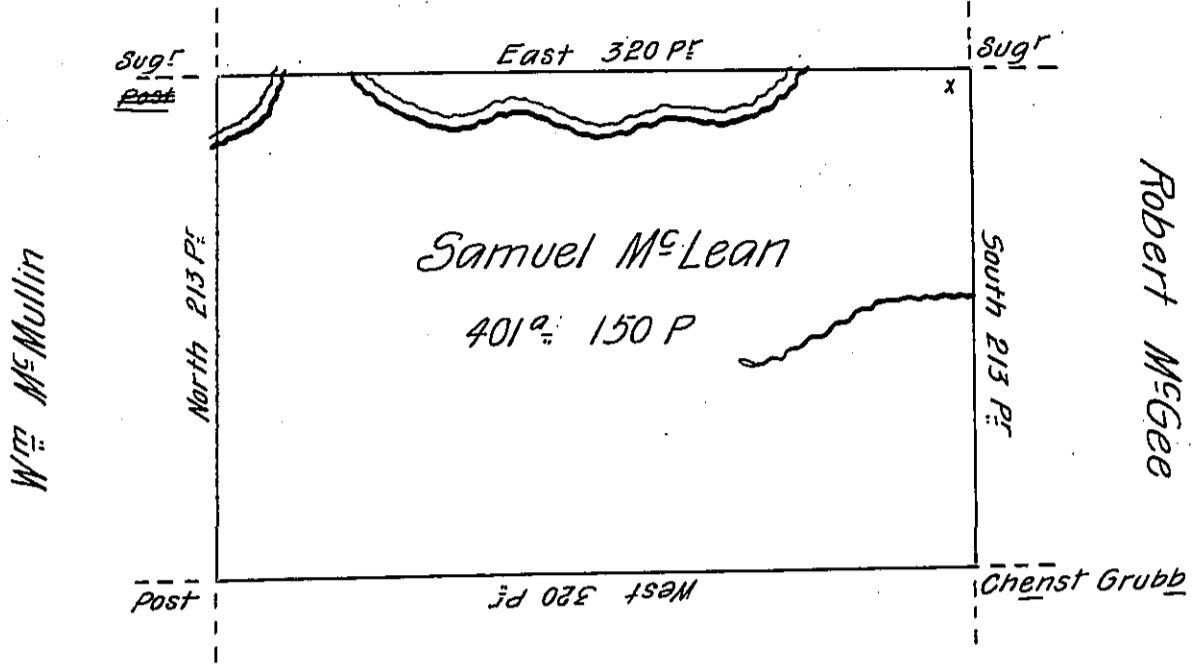


Mathew McConnell



Barny McShane

Situate on the West side of French Creek in Allegheny County

Containing 401 acres and 150 P and allowance of Six per Cent for Roads &c.

Surveyed the 1<sup>st</sup> day of June 1795. In pursuance of a Warrant dated the 30<sup>th</sup> day of May 1792.

Wm Power Dy. Sr

To Daniel Broadhead Esq

Surveyor General.

IN TESTIMONY that the above is a copy of the original remaining on file in the Department of Internal Affairs of Pennsylvania, made conformably to an Act of Assembly approved the 16th day of February, 1833, I have hereunto set my Hand and caused the Seal of said Department to be affixed at Harrisburg, this twenty first day of December 1905.

*Loach R. Brown*  
Secretary of Internal Affairs.